

# GEO SPATIAL DRIVEN IMPACTS

Underground, Land & Sea to Sky



## GEO CONNECT

Asia 2024

Wednesday 6th & Thursday 7th March  
Sands Expo & Convention Centre, Singapore

### Show Opening Hours:

Wednesday 6th March 9:00 am - 7:00 pm (last admission 5:45 pm)  
Thursday 7th March 9:00 am - 5:00 pm (last admission 4:45 pm)



Delivering sustainable solutions  
for the built environment



Managing water resources with  
hydrospatial solutions



Delivering solutions for an  
expanding Asian UAV ecosystem

## SHOW PREVIEW

Plan your visit now to the region's leading showcase for the global geospatial, location intelligence, digital construction and remote sensing industries.

Register now for your complimentary pass to meet 100 global companies and attend more than 60 Tech Talks. The associated conference provides a unique opportunity to learn from and meet with experts at the forefront of industry innovation.

Geo Connect Asia 2024 offers a unique opportunity to learn how real time data, with a geocentric component, can inform better decision-making across industry and government. From climate related challenges and infrastructure planning to marine and mining industry applications your attendance can provide answers to some of the most pressing questions.

Register now at [www.geoconnectasia.com](http://www.geoconnectasia.com) to save S\$55 on your admission pass, which also offers access to Digital Construction Asia, Marine & Hydro Asia as well as Drones & Uncrewed Asia Show.



### Inviting policy makers, operators and planners from government & leading industries

- Agriculture & Forestry
- Border Control
- Building & Construction
- Disaster & Emergency
- Defence & Intelligence
- Healthcare
- Infrastructure
- Manufacturing
- Mining
- Maritime & Ports
- Oil & Gas
- Smart Cities
- Road & Rail
- Utilities & Renewables
- Transportation & Logistics

### Who should attend?

- Agents & distributors
- Architects
- BIM Managers
- Cartographers / Photogrammetrists
- CEOs / Directors / Business Owners / senior management
- Consultants
- Data Analysts
- Department Heads
- Developers / Programmers
- Engineers / Technicians
- Facility & Estate
- Geologists
- GIS Specialists
- Hydrographers
- Landscape Architects
- Operations
- Project Management & Planners
- Professors / Lecturers
- Project Co-ordinators
- Quality control & assurance
- Regulatory & licensing
- Research & development
- Solutions architects / systems integrators
- Students
- Surveyors / Valuers
- Venture Capitalists / Investors

Platinum Sponsor:



Conference Sponsors:



Sponsor:



# EVENTS AT A GLANCE





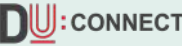


## Conference Overview

**100+**   
Industry Addresses  
& Fireside Chats

**80+**   
Key Opinion Leaders

**30+**   
Leading Keynotes

**20+**   
Countries In-person  
Speakers

| Wednesday 6 <sup>th</sup> March   |   | Thursday 7 <sup>th</sup> March  |   |
|---|---|---|---|
| <b>Exhibition</b><br>9:00 am – 7:00 pm  |   | <b>Exhibition</b><br>9:00 am – 5:00 pm  |   |
| <br><b>Trimble Club</b><br>10:30 am – 4:30 pm              |   | <br><b>Trimble Club</b><br>2:00 pm – 5:00 pm |   |
| <b>Tech Talks</b><br>11:45 am – 5:00 pm   |   | <b>Tech Talks</b><br>10:30 am – 5:00 pm   |   |
|  <b>UAV Innovation Theatre</b><br>11:00 am – 4:00 pm       |  <b>UAV Innovation Theatre</b><br>10:45 am – 3:15 pm      |   |   |
|  <b>Digital underground connect</b><br>11:45 am – 12:45 pm |  <b>Digital underground connect</b><br>10:00 am – 1:00 pm |   |   |
|  <b>Geo CONNECT Main Conference</b>                       |   |   |   |
| <b>Equatorial Theatre</b><br>9:00 am – 4:30 pm  | <b>Canopy Theatre</b><br>10:30 am – 4:30 pm   | <b>Equatorial Theatre</b><br>10:30 am – 4:00 pm   | <b>Canopy Theatre</b><br>10:30 am – 5:00 pm |

**Featuring more than 100 global companies from the worlds of geospatial, location intelligence, remote sensing, digital construction and UAV based solutions:**

3D Target | 3Dflow | Academy of Design Arts & Media Pte. Ltd. | ATIS Cloud | Avetics Global | BIMAGE Consulting Pte Ltd | Blue Marble Geographics | CE-Test & Measurement (S) Pte Ltd | CHC Navigation | Clitymatrix Pte Ltd | Cupix | Dabeeo | Digital Seagull | EarthDaily Analytics | Emesent | Eos Positioning Systems | Epic LIDAR | Eye-2-Eye Communications Pte Ltd | Geosun Navigation | GreenValley International | Guangzhou Geosurv Information Technology Co., Ltd | Heron Airbridge Pte Ltd | HSC Pipeline Engineering Pte Ltd | Hunan Bynav Technology | IESVE | ImpulseRadar | IQPS Inc | KTV Working Drone (Singapore) Pte Ltd | Leica Geosystems Technologies | Map2U | Metasensing AP Pte Ltd | NavVis GmbH | NORBIT US Ltd | Oracle | Parametric Technology (UK) Ltd | Plan Radar | Purui | Intelligent Drone Ltd | Quantum Systems | Radio Detection | Revizto Pty Ltd | Riebo Technology | RIEGL International GmbH | Satel | Satlabs Geosolutions | SBG Systems | Screening Eagle Singapore Pte. Ltd. | SHAREUAV LTD | Shonan Design (S) Pte Ltd | Silicon Sensing Systems | SimActive | Singapore Land Authority | Skyline Software Systems, Inc | ST Engineering Aerospace Ltd | ST Engineering Geo-Insights Pte Ltd | SwissDrones Operating AG | Team Synergy Pte Ltd (Sony) | Temasek Polytechnic | Terra Solid | Thales Solutions Asia Pte Ltd | The Institute of Marine Engineering, Science and Technology | Trimble Inc | Vexcel Imaging | Viasat | Wingtra | Wuhan Global Sensor Technology Co., Ltd | YJP Surveyor (S) Pte Ltd | Zhuhai 4DAGE Technology Co., Ltd

## Destination Information

Venue: **Sands Expo & Convention Centre, Singapore**  
Hall A & B, Marina Bay Sands  
10 Bayfront Avenue  
Singapore 018956

Book your Hotel Accommodation: **Burnaby Solutions**  
Official Travel Agent



**Scan QR code to book your preferred hotel to enjoy preferential rates.**

Contact Ms Silvia Lee for more information

**T:** +65 6911 0855  
**E:** [silvia@burnaby-solutions.com](mailto:silvia@burnaby-solutions.com)

## OPENING PANEL SESSION

### The Diagnostics of Location in Improving Life Quality

10:15 am - 11:00 am, Wednesday 6th March, **Equatorial Theatre**



## MARINE AND HYDRO SESSION

### Creating a Domain for the Hydrospatial World: Building Consistent Data to Best Manage Competing Interests

1:45 pm - 2:30 pm, Thursday 7th March, **Canopy Theatre**



### Applying New Technologies to Build a Hydrospatial Universe

2:45 pm - 3:25 pm, Thursday 7th March, **Canopy Theatre**

## DIGITAL UNDERGROUND CONNECT SESSION

### Building Sustainable Futures with Digital Underground Twins

12:15 pm - 1:00 pm, Wednesday 6th March, **Canopy Theatre**



### Digital Underground: Towards a Sustainable Utility Mapping Ecosystem

10:30 am - 11:20 am, Thursday 7th March, **Trimble Club**

### Digital Underground Connect Expert Stage - Tech Talk: Unleashing Multichannel Technology for Large-Scale Digital Underground Mapping

11:35 am - 11:50 am, Thursday 7th March, **Trimble Club**

### Underground Imaging: Workflows and Technology for Mapping the Underground

11:50 am - 12:45 pm, Thursday 7th March, **Trimble Club**

## DRONES & UNCREWED SESSION

### Skybound Horizons: Unleashing the Future of Advanced Air Mobility

10:35 am - 10:50 am, Thursday 7th March, **Equatorial Theatre**



### Harmonising Operational Procedures: Converging Paths Towards Standardisation

10:50 am - 11:30 am, Thursday 7th March, **Equatorial Theatre**

### Going Global: How the Asia Pacific Region is Leading the Way in Autonomous Aviation

11:45 am - 12:25 pm, Thursday 7th March, **Equatorial Theatre**



Main Conference

<https://qrco.de/beknyH>

## TECH TALK - FREE TO ATTEND

### Advancements in Airborne Synthetic Aperture Radar (SAR)

2:05 pm - 2:20 pm, Wednesday 6th March, **Tech Talk**

### ST Engineering Geo-Insights' Analytics

11:55 am - 12:10 pm, Thursday 7th March, **Tech Talk**



Tech Talk Programme

<https://qrco.de/beknsp>

## UAV INNOVATION THEATRE - FREE TO ATTEND

### Addressing functionalities of precision technology and automation in the agriculture practices: What's next?

11:15 am - 12:15 pm, Wednesday 6th March, **UAV Innovation Theatre**

### What is KTV Working Drone (Singapore) Pte Ltd and who are our partners?

10:45 am - 11:00 am, Thursday 7th March, **UAV Innovation Theatre**



UAV Innovation Theatre

<https://qrco.de/beko2C>

# THE BEST PICKS AT THE GEO MARKET PLACE

**100+**

International & regional advanced technologies to be represented  
**Geospatial Technologies | Digital Construction | Marine & Hydro | Drones Services**



## Trimble

Stand No: **G01**

**Platinum Sponsor**

*Geospatial Technologies*

### Trimble X9 3D Laser Scanner

Terrestrial 3D laser scanning and imaging systems.

Whether you're delivering scan data of as-built conditions, performing comprehensive data analysis or creating a renovation model based on an existing structure, Trimble 3D scanning solutions provide accuracy, range and durability with easy-to-use software for control and review of your scan data in the field.



## 3Dflow

Stand No: **G25**

*Software*

### 3DF Zephyr

3DF Zephyr is the photogrammetry software solution by 3Dflow to automatically reconstruct 3D models from photos: deal with any 3D reconstruction and scanning challenge, no matter what camera sensor, D&UA, or laser scanner device you are going to use.

Hundreds of applications, projects and scenarios. Define your goals, and let 3DF Zephyr tune in to your needs and skills. Leverage photogrammetry, laser scans or both inside just one application. Get true orthophotos, Digital Terrain and Surface models (DTM, DSM), stats and project reports. Perform CAD drawing and generate sections, paths and contour lines. Measure anything, then, export your data to the file format that suits you best.



## Dabeco

Stand No: **F27**

*Remote Sensing*

### INTELLIGENCE (Dabeco Eartheye)

INTELLIGENCE is Dabeco's image deep learning artificial intelligence (AI) technology optimized for areas requiring extensive spatial analysis and data extraction. Leveraging the Dabeco Eartheye, a satellite image-based ground object detection AI service platform, five core technologies are implemented: Super Resolution, Object Detection, Instance Segmentation, 3D Reconstruction, and Change Detection. These technologies adapt to the rapidly changing pace of spatial dynamics, enabling businesses to derive insights and maximize operational efficiency.



## EarthDaily Analytics

Stand No: **G15**

*Remote Sensing*

### EarthPipeline

The World's First Fully Managed Ground Segment Pipeline as a Service. A New Ground solution for New Space designed to transform your downlinked satellite data into high scientific quality "Analysis Ready Data" (ARD) at scale.

We offer customers a fully managed service that allows for the downlink and processing satellite data, and scale your satellite operations quickly, easily and cost-effectively without having to worry about building or managing your own ground station infrastructure.

Let Your Mission Be Known for Quality Automatic high-quality absolute and flatfielding calibration provides scientific radiometry suitable for even the most subtle change detection applications.

Have Confidence in Your Quality Automated QA of each product provides an auditable guarantee that you meet your product specification objectives and customer SLAs

**Emesent** Stand No: **K32***Geospatial Technologies*  
**HOVERMAP ST-X**

Featuring the industry-leading capabilities of Hovermap ST at its core, ST-X captures more detailed data, faster, and from further away, with 3x the scanning range and double the number of laser sensors. Lighter, and uniquely versatile, Hovermap ST-X extends the safety and efficiency of long-distance autonomous LiDAR mapping even more.

**GreenValley International** Stand No: **H20***Software*  
**LiAir X3-H**

LiAir X3-H is the newest compact, high-performance unit in the LiAir series by GreenValley International. It adopts a new integrated design style and integrates lightweight LiDAR, self-developed inertial navigation, a high-resolution mapping camera, and onboard computer systems providing new levels of efficiency.

**iQPS Inc** Stand No: **P03***Satellites Images*  
**SAR data acquired by QPS-SAR**

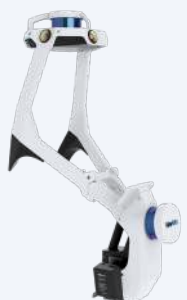
QPS-SAR satellite offers the world best class resolution ( Spotlight mode:46cm×46cm ) \* and quality. We aim at every 10 minutes observation with 36-QPS-SAR satellite constellation and rapid data delivery leveraging data relay services beyond 2025.

Defined based on off-nadir angle@30 degree.

**Leica GCAsystems Technologies** Stand No: **E01***Geospatial Technologies*  
**Leica ComBox60**

Every automated monitoring project requires not just sensors and software, but also power and communication components in the field. With all these different components, installation can be complex and a challenge when trying to figure out how to set everything up and automating it to make it run 24/7. This process is now simplified with the compact and light-weight Leica ComBox60, lowering the entry barrier into the world of automated monitoring.

Designed with simplicity in mind, the ComBox60 only needs to be mounted in the field, have the sensors connected to it, and with the press of a button, is all set up and ready to start monitoring. Small, compact and lightweight, the ComBox60's rugged, IP66-rated weather-proof exterior can withstand all types of harsh environmental conditions eliminating the need for additional protective enclosure for outdoor use.

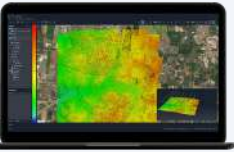
**NavVis** Stand No: **F01***Geospatial Technologies*  
**NavVis VLX 2**

NavVis VLX 2 is the industry-trusted wearable mobile mapping system designed for laser scanning professionals that require fast, accurate, and affordable reality capture of the built environment.

**RIEGL** Stand No: **H15**

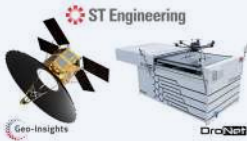
*Geospatial Technologies*  
**RIEGL VZ-600i Terrestrial Laser Scanner**

RIEGL's latest generation of professional Terrestrial Laser Scanners stands for extreme versatility, high productivity, ultimate performance, and additional mobility – providing an excellent return of investment. 3D position accuracy of 3 mm, less than 30 sec scan time for high-resolution scans with 6 mm point spacing at 10 m, enabling more than 60 scan positions/hour with real-time registration, weight less than 6 kg (13 lbs), 2.2 MHz PRR, three internal cameras & GNSS integrated, and also prepared for mobile mapping applications – these key features will speed up your workflow in indoor and outdoor applications like AEC (Architecture, Engineering, Construction), BIM (Building Information Modeling), as-built surveying, forensic and crash scene investigation, archeology & cultural heritage documentation, forestry, and many more.

**SimActive** Stand No: **C26**

*Software*  
**Correlator3D**

SimActive is the developer of Correlator3D™ software, a patented end-to-end photogrammetry solution for the generation of high-quality geospatial data from satellite and aerial imagery, including UAVs. Correlator3D™ performs aerial triangulation (AT) and produces dense digital surface models (DSM), digital terrain models (DTM), point clouds, orthomosaics, 3D models and vectorized 3D features. Powered by GPU technology and multi-core CPUs, Correlator3D™ ensures matchless processing speed to support rapid production of large datasets. SimActive has been selling Correlator3D™ to leading mapping firms and government organizations around the world, offering cutting-edge photogrammetry software backed by exceptional customer support. For more information, visit [www.simactive.com](http://www.simactive.com).

**ST Engineering Geo-Insights** Stand No: **D05**

*Remote Sensing*  
**Geo-Insights**

Geo-Insights develops geospatial analytics solutions to transform data into insights to support informed decision making for customers in the maritime, agriculture, energy and infrastructure sectors.

Visit our website at: [www.geo-insights.ai](http://www.geo-insights.ai)

**Terrasolid** Stand No: **G32**

*Software*  
**TerraScan**

TerraScan is the main application in the Terrasolid Software family for managing and processing all types of point clouds. It offers import and project structuring tools for handling the massive number of points of a laser scanning campaign as well as the corresponding trajectory information. Various classification routines enable the automatic filtering of the point cloud.

**Vexcel Imaging** Stand No: **H02**

*Geospatial Technologies*  
**UltraCam Dragon 4.1**

The UltraCam Dragon 4.1 is Vexcel's first hybrid aerial mapping system for deep insights into complex environments at highest collection rate. The system produces high-resolution nadir and oblique aerial imagery enriched with precise elevation information obtained by a high performance 2.4 MHz RIEGL Waveform LiDAR scanner collecting up to 2 million measurements per second. Experience sharp imagery at best GCAMetry and radiometry, paired with a unique LiDAR scan line pattern at 5 different angles including a nadir view to see into urban canyons and measure facades. The integration of best-in-class sensors results in extensive, multidimensional information gain allowing you to explore, analyze, and understand environments like never before. The system will be available in summer 2024.



## CHC Navigation

Stand No: **F10**

*Marine & Hydro*  
**APACHE 3 Pro**

The APACHE 3 Pro is a compact unmanned surface vehicle (USV) designed for autonomous bathymetric surveys in shallow waters. Its double-layer carbon fiber hull provides impact resistance and unsinkability. Its IP67 rating ensures dust and water tightness, protecting onboard components. The semi-recessed motor reduces water resistance, increases endurance, and allows speeds up to 6 m/s.

The Apache3 Pro GNSS RTK + Inertial navigation system ensures accurate measurements even when the GNSS signal is interrupted, such as under a bridge. The built-in CHCNAV D270 echosounder ensures reliable and accurate depth measurements.

In addition to standard package of the USV, echosounder and RTK GNSS/INS sensors, the Apache 3 Pro USV can be equipped with water analysis probes to measure water quality parameters. This data can be used by environmental scientists and hydrographers.



## NORBIT

Stand No: **G20**

*Marine & Hydro*  
**iWBMS Sh Stabilised**

Compact High-Resolution Integrated and Motion Stabilised 3D&4D Shallow Water Bathymetric System. This cylindrical high-resolution curved array bathymetric system is designed to function effectively in extreme operational environments with high vessel motion.

It offers rapid mobilisation at any location and time, providing active roll, pitch and yaw stabilised bathymetry.

Additionally, it delivers standard imagery and backscatter outputs, ensuring the highest quality survey data performance.

The small system form factor, low power consumption, and tight integration enable installation on various survey platforms such as USVs, pole mounts, and vessel hull mounting configurations.

The system supports native data collection by DCT NORBIT data acquisition software for sonar and GNSS/INS data files.



## SBG Systems

Stand No: **G21**

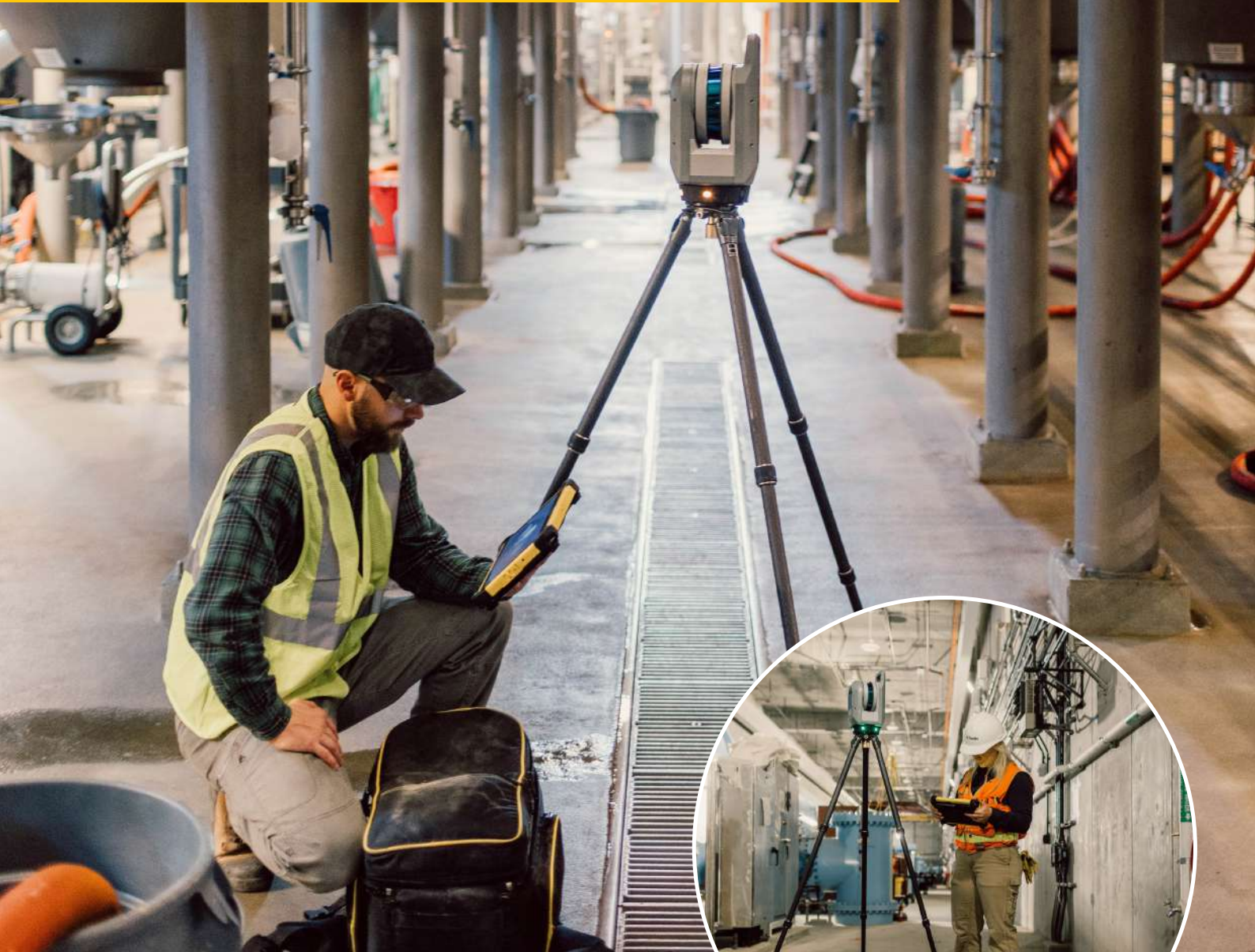
*Marine & Hydro | Drones*  
**Apogee-D**

Apogee-D is an all-in-one INS/GNSS which embeds an RTK and PPP ready GNSS receiver for applications where space is critical but high performance required.

This highly versatile MEMS-based Inertial Navigation System comes with one or two antennas.

# Trimble X9 Laser Scanner

Automatic Registration, Automatic  
Calibration, 150m with 1million pts/sec







## Trimble

Stand No: **G01**

Platinum Sponsor

Digital Construction

### Trimble X9 3D Laser Scanner

Terrestrial 3D laser scanning and imaging systems.

Whether you're delivering scan data of as-built conditions, performing comprehensive data analysis or creating a renovation model based on an existing structure, Trimble 3D scanning solutions provide accuracy, range and durability with easy-to-use software for control and review of your scan data in the field.



## BIMAGE Consulting

Stand No: **D20**

Digital Construction

### Autodesk Construction Cloud & Construction IQ (Autodesk AI)

Analyse project data to identify and prioritize design, quality, safety, and project control risks to help resolve issues and make decisions earlier.

Demand for new ways of designing and making is accelerating. Our customers are being asked to do things faster, more sustainably, at lower cost, and with higher quality. Our advancements in AI are helping you to meet the moment – not just by increasing productivity, but by giving you tools that help you push the boundaries of what's possible. We have been investing in artificial intelligence for over a decade. Today, Autodesk AI is available to augment creative problem-solving and exploration, automate tedious and repetitive work, and give individuals and teams access to powerful analysis tools to inform decision making.



## Cupix

Stand No: **H10**

Digital Construction

### CupixWorks

CupixWorks, is a SaaS platform that transforms 360° photos taken by off-the-shelf 360 cameras into a virtual 3D space and provides a cloud-based unified platform for industry data formats. It leverages AI to provide construction progress insights to customers and is used by building and infrastructure clients across various projects.



## IESVE

Stand No: **G14**

Digital Construction

### ICL Digital Twin

After more than a quarter of a century facilitating the energy efficient design of individual buildings across the globe with our flagship Virtual Environment (VE) software, now, with our ICL Digital Twin technology, we're tackling the built environment at scale with an entire suite of tools to model, analyse and continually optimise entire groups of buildings, portfolios, communities, cities and resource networks across their lifecycle. Providing a truly scalable solution to decarbonise the built environment.

Our tools integrate physics-based simulation with 3D models, real-time operational data, machine learning and AI, to provide a digital twin solution for the built environment that is unique to any other in today's market. An overview of our current products follows.



## ImpulseRadar Stand No: G10

Digital Underground  
**Raptor 3D GPR system - puch cart**

Raptor is a state-of-the-art high-speed 3D-GPR Array.

Designed to be manually pushed across the survey area, which allows the arrangement of up to 8-channels with a total width of 0.9 m. The handle assembly is fully foldable to reduce the physical footprint, making transportation and storage much more efficient. The complete assembly can be moved easily from site to site and can even fit into the boot space of a standard estate-car/station-wagon.

### New Raptor push cart carrier

- Updated hood design offering extra support for more sturdy protection and longevity
- New rear axel design with larger and more rugged wheels to assist in survey alignment over rough and uneven terrains
- New magnetic axle encoder for more accurate and reliable distance measurements
- New four-wheel option, with support for the existing three-wheel version to match user requirements and survey conditions
- New higher-capacity rechargeable battery allows up to ten hours of continuous operation

## ORACLE Oracle Stand No: F31

Construction and Engineering  
Digital Construction  
**Oracle Smart Construction Platform**

Oracle Construction and Engineering delivers a comprehensive cloud-based project delivery platform that asset owners and project leaders rely on for the visibility and control, connected supply chain, and data security needed to drive performance and mitigate risk across their processes, projects, and organisation. Our scalable solutions enable digital transformation for teams that plan, build, and operate critical assets, improving efficiency, collaboration, and change control across the project lifecycle.

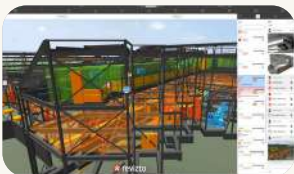
For more information visit us at: [www.oracle.com/construction-and-engineering](http://www.oracle.com/construction-and-engineering)



## PlanRadar Stand No: E20

Digital Construction  
**PlanRadar**

PlanRadar is a digital platform for documentation, task management and communication in construction and real estate projects. The platform enables teams to increase quality, cut costs and realise work faster. By improving collaboration and providing access to real-time data, PlanRadar's easy-to-use platform adds value to every person involved in a building's lifecycle, with flexible capabilities for all company sizes.



## Revizto Stand No: H30

Digital Construction  
**Revizto**

Connecting all project members on one platform. Revizto unifies BIM intelligence and makes it immediately accessible and actionable for the entire project team. With Revizto's advanced Issue Tracker project team members can identify and manage model-based issues in the 3D space and 2D sheets, including addressing clash groups. Revizto provides unified access to a project's data both for 2D and 3D workflows, so anyone can use it depending on project requirements.



## Screening Eagle Singapore Stand No: E14

Digital Underground  
**GM8000**

The groundbreaking Mobile Mapping System, GM8000, enables subsurface scanning at highway speed.



**Viasat** Stand No: **C01**

**Platinum Sponsor**

*Air Navigation Systems & UTM*  
**Velaris – satcom connectivity for UAVs**

A dedicated satellite communications service for UAVs and Advanced Air Mobility aircraft, enabling you to operate beyond visual line of sight. With a robust connection through our L-band satellite network, plus access to our industry-leading partner ecosystem, you'll finally have the power to harness commercial opportunities in autonomous cargo and urban air mobility (UAM).



**Heron Airbridge** Stand No: **D15**

*Drones Uncrewed Traffic Management*  
**AirBridge UAS Operation & Traffic Management Platform**

AirBridge is a digital platform that enables data and workflow exchange between uncrewed aircraft system (UAS) operators, airspace managers, regulators, and other stakeholders to plan, schedule, authorise and monitor UAS operations according to agreed operational and regulatory protocols. The platform is built to international and open-source standards for interoperability with a wide range of UAS hardware, software and other UTM service providers.



**Quantum Systems** Stand No: **C20**

*Drones*  
**Trinity Pro**

Trinity Pro is designed to adapt to changing requirements, evolve in capabilities, and accelerate decision making through aerial data. Future integrations like AI capabilities give new insights and help professionals in various industries to make more informed decisions and drive their business forward.

With more than 75,000 flight hours on a global scale it has proven its performance, accuracy, and reliability. The Trinity Pro incorporates the latest technology: the new Quantum-Skynode autopilot and the Linux mission computer, which bring computing power and increased internal storage as well as enhanced connectivity onboard the aircraft. This allows downstream integration of next-generation cameras, but also of logging, simulation, and AI capabilities.



**Riebo Technology** Stand No: **G23**

*Drones Camera*  
**DG6M1 Master Pro Oblique Camera - Full-Frame**

Our main products are half-frame, full-frame and medium-format orthophotography cameras, as well as oblique photography cameras. The comprehensive product matrix meet different needs in GCAspatial information data collection and post-processing applications for worldwide.

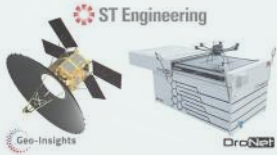


**Sony Electronics Asia Pacific** Stand No: **C11**

*Drones Camera*  
**High resolution and lightweight camera ILX-LR1**

The ILX-LR1 is a professional camera with a 61.0 effective megapixel, full-frame image sensor, interchangeable E-mount lenses, and full remote operation via the Sony Camera Remote SDK (Software Development Kit), designed specifically for drone and industrial applications.

<https://pro.sony/products/installable-cameras/ilx-lr1>



## ST Engineering Aerospace Ltd

Stand No: **D05**

Drones  
**DroNet**

DroNet offers our customers turnkey Unmanned Aircraft System (UAS) solution and operations support, including design and customisation, flight operations and full integrated logistics support. As the OEM for the DroNet solution, we deliver cutting-edge capabilities for reliable Beyond Visual Line-of-Sight (BVLOS) flight operations for Surveillance, Inspection and Deliveries operations.

Visit our website at: <https://dronet.com.sg/>



Twin-Rotor Aircraft

## SwissDrones Operating AG

Stand No: **P05**

Drones  
**SDO 50 V3**



## Thales Solutions Asia

Stand No: **C10**

Drones & UTM  
**Unmanned Airspace Management Solutions**

Thales' UAS Airspace Management solution is an integrated system that caters to the needs of all stakeholders to ensure safety of the airspace. Drone pilots are able to access the airspace in a secured way, with the capabilities brought forth by the mission request tools linked to the UTM. For Authorities, it offers an end-to-end management of airspace activities with a strategic and tactical level of operations.

Thales will enable the next generation of aerial vehicles – crewed and uncrewed, to become a reality!



## Wingtra

Stand No: **H11**

Drones  
**WingtraOne GEN II**

The WingtraOne mapping drone's unique set of features empowers you to minimize your time flying and get more work done, be it another project in the field or analyzing your data at the office.

**SONY**

**ILX-LR1**

- High-resolution, detailed images
- Compact, light-weight design
- Easy integration into drone

**Camera Remote SDK**

- Dedicated SDK for integration with bespoke applications



**R**  
RTOBOTICS

**HERA**

- 33-lb payload capacity
- Fit in a backpack with battery and camera included.

**Stand: C11**



# DELIVERING SOLUTIONS FOR AN EXPANDING ASIAN UAV ECOSYSTEM



## DRONES & UNCREWED

Asia 2024

Wednesday 6th & Thursday 7th March  
Sands Expo & Convention Centre, Singapore

### Show Opening Hours:

Wednesday 6th March 9:00 am - 7:00 pm (last admission 5:45 pm)  
Thursday 7th March 9:00 am - 5:00 pm (last admission 4:45 pm)



Geospatial driven impacts:  
underground, land & sea to sky



Delivering sustainable solutions  
for the built environment



Managing water resources with  
hydrosatial solutions

## SHOW PREVIEW

### Plan your visit now to Drones & Uncrewed Asia 2024 on the 6th & 7th March in Singapore

Come and join us to learn how the application of drone and UAV technologies are creating positive impacts on daily lives and helping businesses acquire critical data to make better informed decisions.

Maximise your 2-day visit to connect with 100 leading companies, attend more than 30 Tech Talks at the UAV Innovation Theatre and join the half day Mainstage Conference programme. With a focus on safety, interoperability and reliability the industry is preparing to move to another level.

**Register now to secure your admission to save S\$55, which also offers access to the Geo Connect Asia, Digital Construction Asia and Marine & Hydro Asia shows.**



### Inviting policy makers, operators and planners from government & leading industries

- Agriculture & Forestry
- Border Control
- Building & Construction
- Disaster & Emergency
- Defence & Intelligence
- Healthcare
- Infrastructure
- Mining
- Maritime & Ports
- Oil & Gas
- Smart Cities
- Road & Rail
- Utilities & Renewables
- Transportation & Logistics

### Who should attend?

- Agents & distributors
- Consulting
- Data & information technology
- Design & planning
- Drones services
- Education / training
- Engineering
- Facility & asset management
- Geospatial & GIS data
- Management services (legal, financial)
- Manufacturing & OEM
- Marketing, sales & media
- Operations
- Owners / senior management
- Project management
- Purchasing & procurement
- Quality control & assurance
- Regulatory & licensing

Organised by:

1895 MONTGOMERY GROUP  
ASIA

Platinum Sponsor:

Viasat  
+Inmarsat

Supporting Partner:

aaIS

Knowledge Partner:

DRONE  
INDUSTRY INSIGHTS